



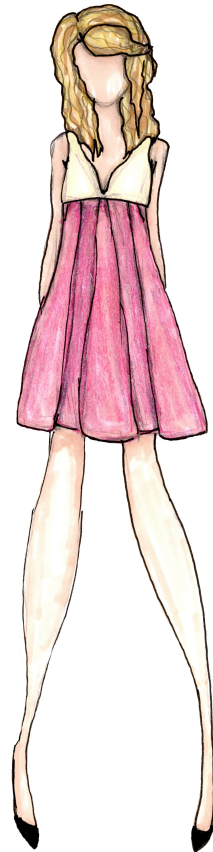
[www.missabydesign.com](http://www.missabydesign.com)



*Missa by*



Missa by Desi



**Taylor Swift Dress**  
by Missa by Design



**Skye Sweetnam**  
in Missa by Design



**AJ Michalka of Aly & AJ  
in Missa by Design**



**Aly Michalka of Aly & AJ  
in Missa by Design**

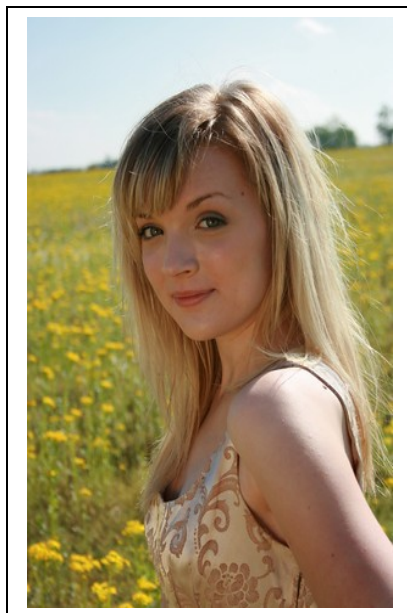
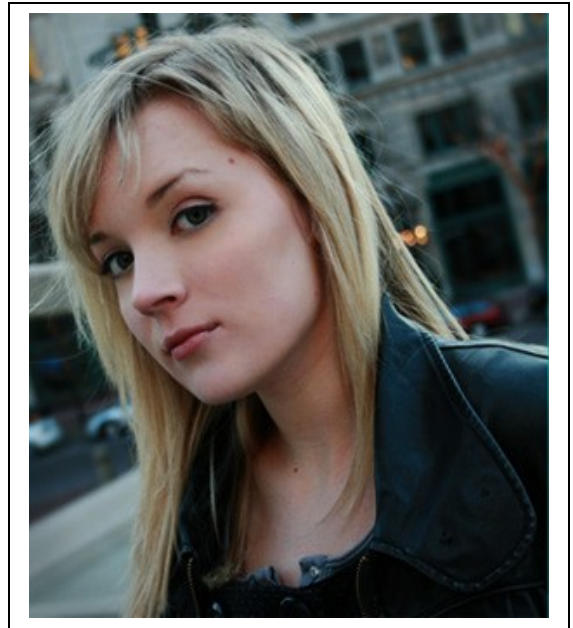
# Maryssa Stumpf

Creativity has been flowing through me my entire life. I started off performing in local theatres at age nine, and it was around that same time I discovered another interest of mine: fashion design.

I wrote a goal on a small paper kite I'd constructed to become a fashion designer. I felt that just like a kite takes off far in the sky; my dreams would do the same. This dream has certainly taken off and formed into something I'm extremely passionate about.

I was fortunate enough to design tops for the Disney singing and acting duo Aly & AJ, which they wore during their Insomniatic Tour in the summer of 2007. The following year also brought me another musician to style, with Canadian Pop singer Skye Sweetnam allowing me to create a custom dress for her. Most recently I designed a dress for Country singer Taylor Swift.

My ultimate goal is to continue to pursue what I love, surround myself with those who share the same enthusiasm in fashion and performing as I do, and to give back by helping others achieve their dreams.



[missa@missabydesign.com](mailto:missa@missabydesign.com)